

Improvised Explosive Device (IED)

DISCOVERY or DETONATION

- Announce "Bomb Cover" or "Bomb Go"
- Secondary threat scan (device, 5ft, 25ft)
- Maintain 540° scan
- NEVER TOUCH** Bombs
- Bombers are Bombs

CONTACT and RESCUE

- Consider threat to life and alternate route
- Mark (Chem Lights) and bypass
- Provide security element if possible

EXPOSED SURVIVOR RESCUE

- Direct survivor movement explicitly
- View area for secondary threats
- Establish narrow cordon in/out of area
- Provide Direct Threat Care only
- Evacuate to standoff / Isolate / Barricade

FROM RADIO SAFE DISTANCE (300ft or standoff)

- Report IED location, description, size
- Report action taken
- Request Bomb Squad

NO SURVIVORS THREATENED

- View area for secondary threats
- Reposition personnel to safe standoff
- Report impact to assignment and priority
- Cordon off 360° device kill zone
- Control cordon security awaiting Bomb Squad

Standoff Distance[‡]

IED	Size	Minimum with Cover Preferred	
		Minimum with Cover	Preferred
Pipe Bomb	5 lb	70 ft	1200 ft
Suicide Bomber	20	110	1700
Briefcase/Suitcase	50	150	1850
SUV / Van	1000	400	2400

[‡]See Help Guide and DHS reference for IMPORTANT information.

C3 ACTIVE SHOOTER INCIDENT MANAGEMENT CHECKLIST

©Copyright 2019, C3 Pathways, Inc. All rights reserved. May NOT be duplicated or USED without written permission. Visit <http://c3.cm/asc> for **USAGE REQUIREMENTS** and to receive written Copyright permission.

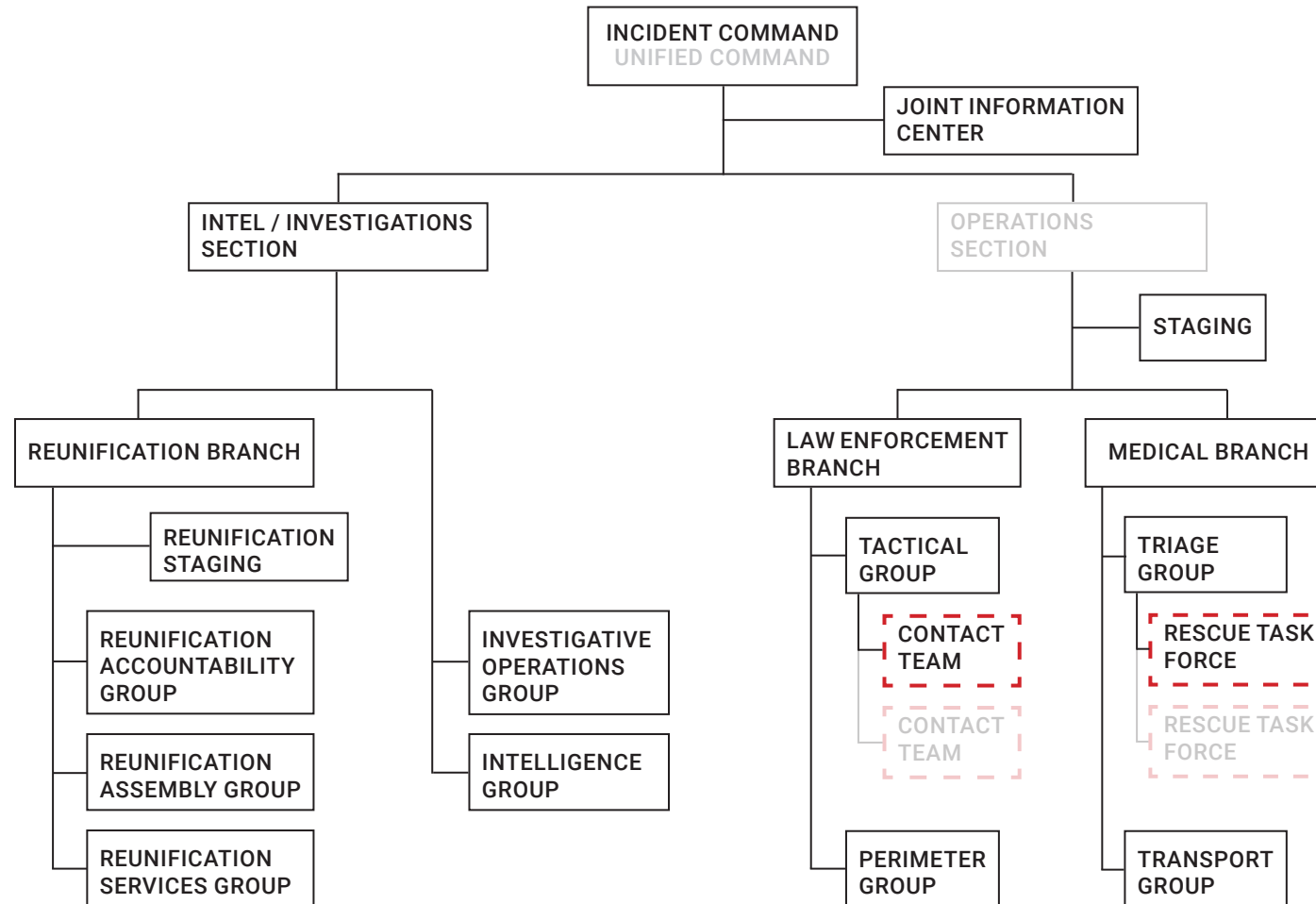


Fig 1. Active Shooter Incident Command Organizational Chart

WARNING! Rev 3.0 7/2019

DO NOT USE UNLESS AUTHORIZED. USER ASSUMES ALL RISK. FOR USAGE REQUIREMENTS AND WRITTEN PERMISSION, VISIT <http://c3.cm/asc>



+1 (407) 490-1300 • +1 (877) 340-4032
1335 Oviedo Mall Blvd, Oviedo, FL 32765
C3Pathways.com • info@c3pathways.com



NATIONAL CENTER FOR INTEGRATED EMERGENCY RESPONSE

+1 (407) 328-7900
1325 Oviedo Mall Blvd, Oviedo, FL 32765
NCIER.org • info@ncier.org

NATIONAL STANDARD for managing active shooter events as endorsed by:



c3.cm/ntoa



NATIONAL PREPAREDNESS DIRECTORATE
NATIONAL TRAINING AND EDUCATION DIVISION

NIMS Review: Consistent with NIMS

2015, 2016, 2022

c3.cm/nims

MEETS **NFPA 3000**[®]

all applicable Standards

c3.cm/nfpa

NFPA 3000[®] is a registered trademark of the National Fire Protection Association's Active Shooter/Hostile Event Response (ASHER) Standard.

START ON OTHER SIDE

START HERE

LE First arriving

- Size up report
- Identify Hot Zone
- Establish COMMAND (mobile)
- Radio ID: CONTACT 1
- Engage

LE 2nd-4th arriving

- Communicate with CONTACT 1
- Link-up

LE 5th arriving (5th Man)

- Radio ID:TACTICAL
- Get briefing (verbal)
- Assume COMMAND
- Set STAGING location
- Request additional resources
- Assign more CONTACT TEAMS

First LE Supervisor

- Get briefing (verbal)
- Assume COMMAND
- Set COMMAND POST location
- Assign STAGING manager
- Assign PERIMETER GROUP
- Assign MEDICAL BRANCH to FD/EMS

Second LE Supervisor

- Get briefing (verbal)
- Assume COMMAND
- Request additional resources
- Designate First LE Supervisor as LAW ENFORCEMENT BRANCH
- Assign INTELLIGENCE SECTION
- Assign LEAD PIO to establish JOINT INFORMATION CENTER

First FD/EMS Supervisor

- Go to COMMAND POST
- Request MEDICAL BRANCH assignment

Law Enforcement

LAW ENFORCEMENT BRANCH

- Get briefing (verbal)
- Co-locate with MEDICAL BRANCH
- Coordinate with INTELLIGENCE SECTION

TACTICAL GROUP

- Coordinate CONTACT TEAM(s)
- Prioritize 1Threat, 2Rescue, 3Clear
- Update Hot and Warm Zones
- Update casualty information to Triage Group

CONTACT TEAM

- Contain or neutralize threat
- Update location as moving
- Report casualty locations, numbers
- Establish Casualty Collection Point(s)

PERIMETER GROUP

- Separate radio channel*
- Establish INNER PERIMETER
- Establish OUTER PERIMETER

INTELLIGENCE / INVESTIGATIONS SECTION

- Get briefing (verbal)
- Separate radio channel*
- Coordinate with Communications Center
- Collect incoming information, tips, leads
- Brief COMMAND
- Consider REUNIFICATION BRANCH
- Assign INVESTIGATIVE OPERATIONS GROUP
- Assign INTELLIGENCE GROUP

*Leader monitors two channels, their channel and the assigned BRANCH / COMMAND channel.

†Target minimum staffing 2 LE, 2 Medical for each RTE.

Fire / EMS

MEDICAL BRANCH

- Get briefing (verbal)
- Request additional resources
- Assign TRIAGE GROUP
- Assign TRANSPORT GROUP
- Co-locate with LAW ENFORCEMENT BRANCH
- Consider TREATMENT GROUP

TRIAGE GROUP

- Get briefing (verbal)
- Stand-up RESCUE TASK FORCE(s)
- Co-locate with TACTICAL GROUP
- Get operable areas, routes, and Casualty Collection Point location(s)
- Deploy RESCUE TASK FORCE(s)

RESCUE TASK FORCE†

- Assemble team and equipment
- Notify TACTICAL when deploying
- If not done, establish Casualty Collection Point(s)
- Rapidly assess casualties
- Report counts to TRIAGE GROUP
- Identify Ambulance Exchange Point and confirm with TACTICAL
- Coordinate casualty evacuation

TRANSPORT GROUP

- Get briefing (verbal)
- Co-locate with TACTICAL GROUP
- Determine routes
- Separate radio channel*
- Get Hospital capacity count
- Transport casualties from Ambulance Exchange Point(s)
- Target 3 per ambulance (1ea Red/Yel/Grn)
- Distribute to Hospitals
- Keep Transport Log

Multi-Discipline

STAGING

- Check-in and list resources
- Give resources assignment, location, and channel
- Prioritize assignments as directed
- Maintain minimum resources as directed

LEAD PIO (JOINT INFORMATION CENTER)

- Establish JOINT INFORMATION CENTER
- Establish Media Staging Area
- Clear all messaging and releases with COMMAND
- Announce Reunification site when authorized

REUNIFICATION BRANCH

- Get briefing (verbal)
- Select Reunification Location
- Location approved by INTELLIGENCE SECTION
- Notify DISPATCH of Location **Not for public release**
- Assign REUNIFICATION STAGING MANAGER
- Request additional resources
- Assign SERVICES GROUP
- Assign ACCOUNTABILITY GROUP
- Assign ASSEMBLY GROUP
- Notify INTELLIGENCE SECTION when ready to announce Location to public

REUNIFICATION SERVICES GROUP

- Assign Set-up Unit
- Assign Law Enforcement Unit
- Assign Transportation Unit
- Assign Medical Unit
- Establish Family Assistance Center

REUNIFICATION ACCOUNTABILITY GROUP

- Assign Accountant Unit
- Assign Checker Unit
- Assign Greeter Unit
- Assign Reunifier Unit
- Assign Exit Control Unit

REUNIFICATION ASSEMBLY GROUP

- Assign Class Leader Unit
- Assign Nutritional Support Unit
- Consider Entertainment Unit